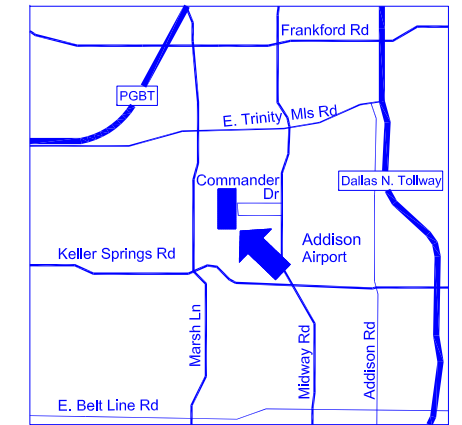
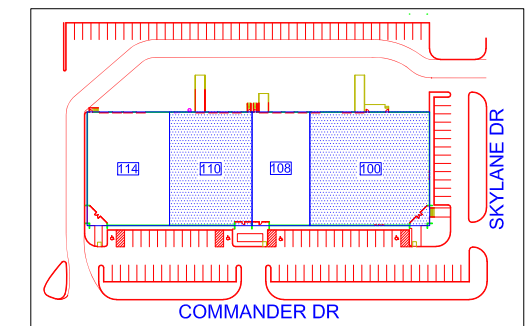


OVERALL FLOOR PLAN



LOCATION MAP



SITE PLAN

3200 Commander
Carrollton, TX 75006

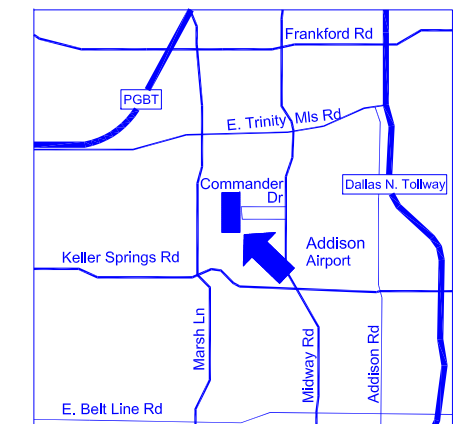
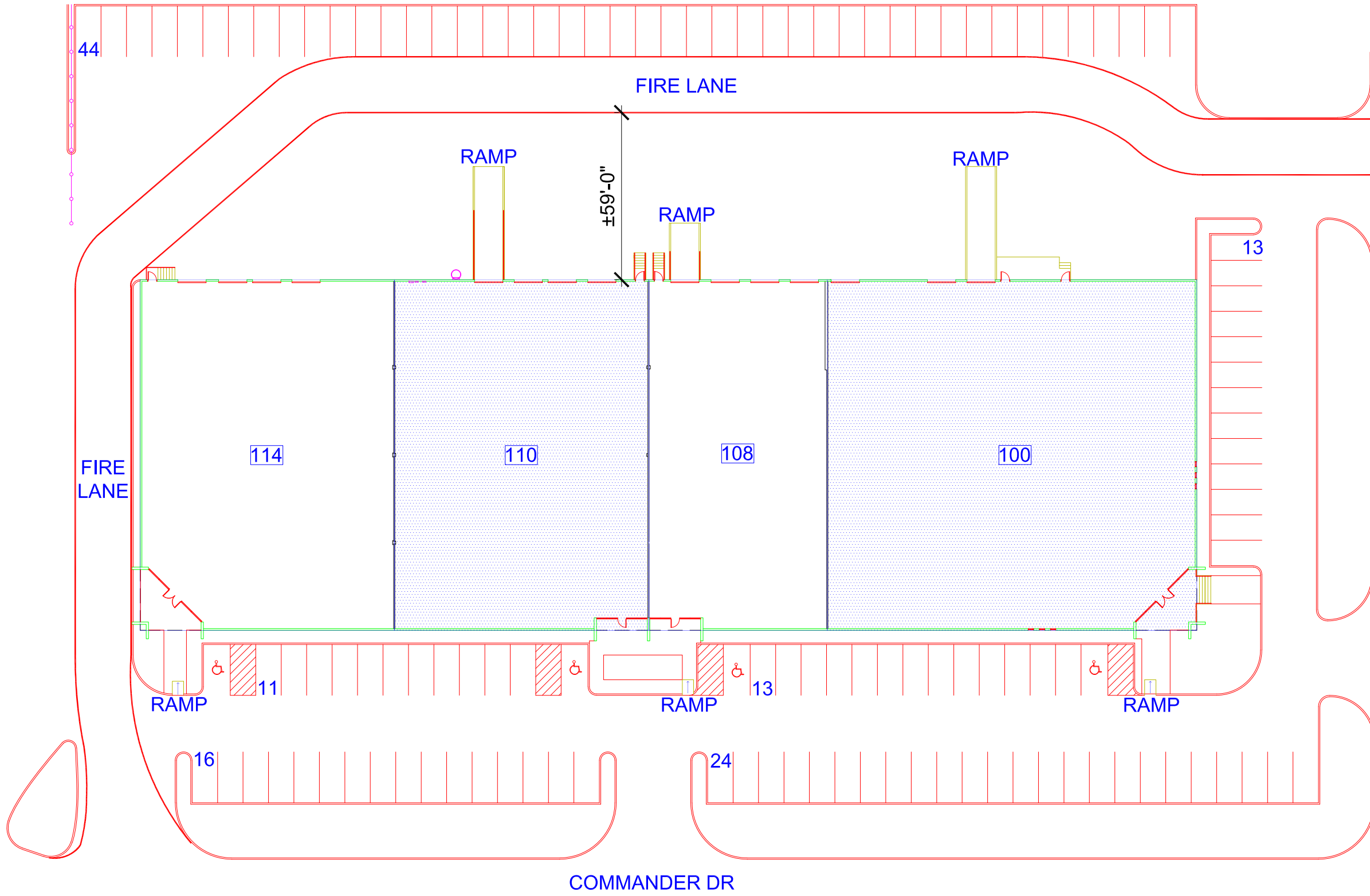
S.F. Summary

SUITE 100	25,151 S.F.
SUITE 108	7,719 S.F.
SUITE 110	11,068 S.F.
SUITE 114	10,981 S.F.
GRAND TOTAL	54,919 S.F.

Building Features

- 22' CLEAR HEIGHT
- 43' X 31' COLUMN BAY SPACING
- FULLY AIR CONDITIONED
- (15) 10 X 10 DOCK DOORS; (3) WITH RAMPS
- EASY ACCESS TO MAJOR THOROUGHFARES





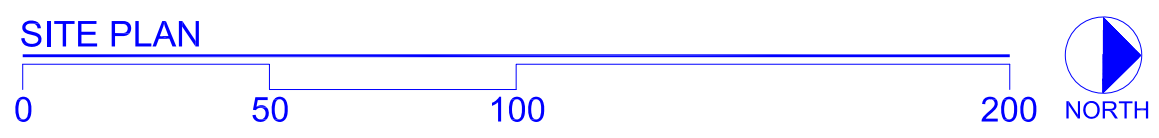
3200 Commander
Carrollton, TX 75006

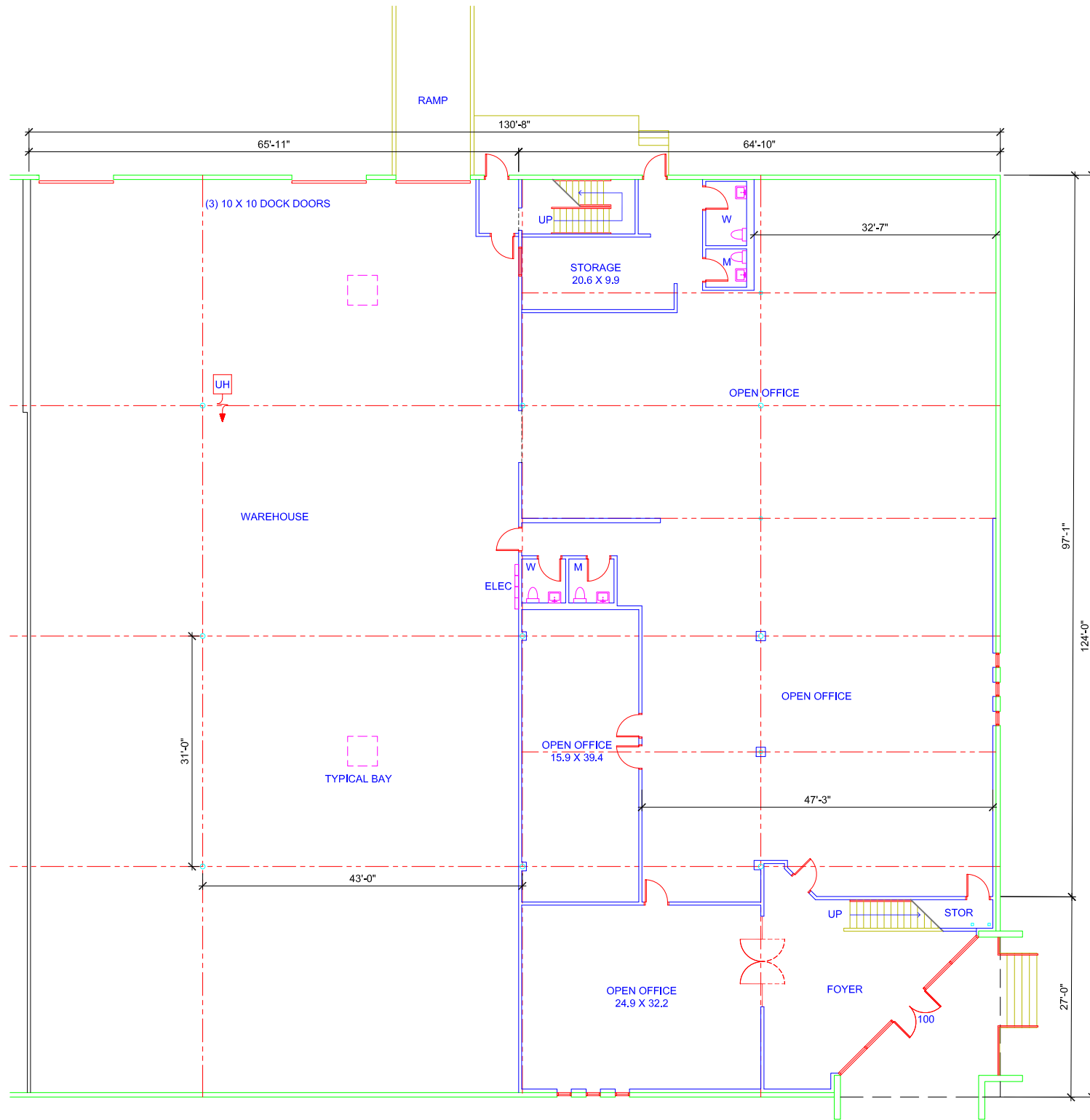
S.F. Summary

SUITE 100	25,151 S.F.
SUITE 108	7,719 S.F.
SUITE 110	11,068 S.F.
SUITE 114	10,981 S.F.
GRAND TOTAL	54,919 S.F.

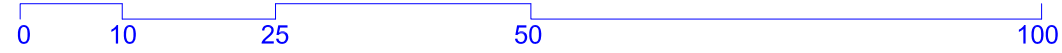
Building Features

- 22' CLEAR HEIGHT
- 43' X 31' COLUMN BAY SPACING
- FULLY AIR CONDITIONED
- (15) 10 X 10 DOCK DOORS; (3) WITH RAMPS
- EASY ACCESS TO MAJOR THOROUGHFARES

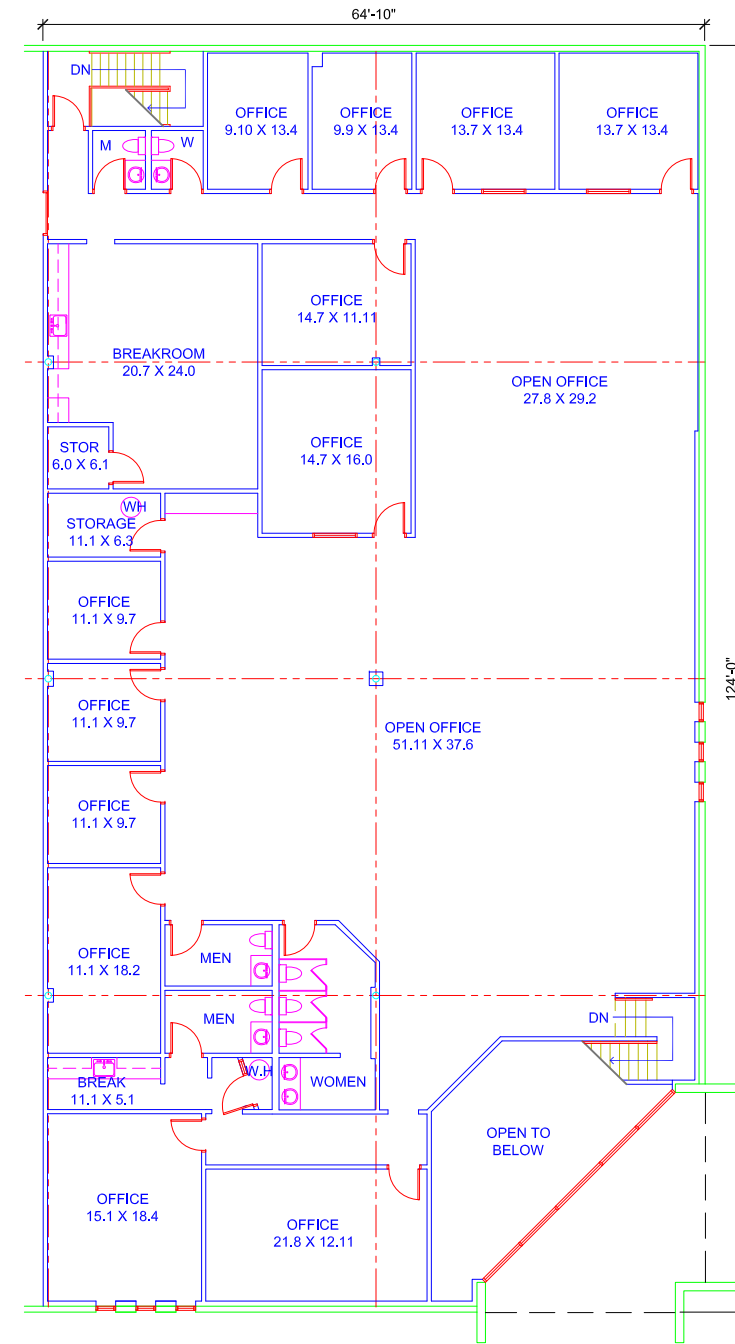




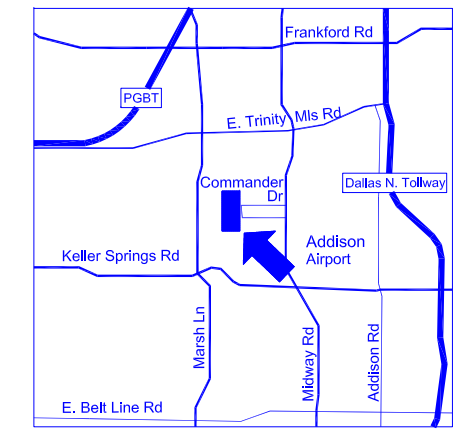
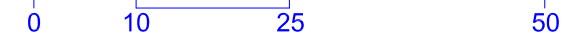
**SUITE 100
FIRST FLOOR PLAN**



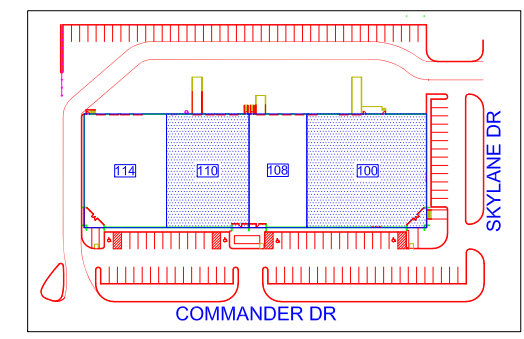
FIRST FLOOR OFFICE	8,039 S.F.
SECOND FLOOR OFFICE	8,039 S.F.
OFFICE TOTAL	16,078 S.F.
WAREHOUSE	9,073 S.F.
TOTAL	25,151 S.F.



**SUITE 100
SECOND FLOOR PLAN**



LOCATION MAP
NORTH



SITE PLAN
NORTH

**3200 Commander
Carrollton, TX 75006**

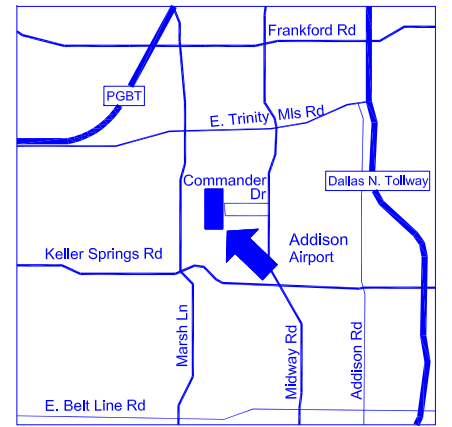
S.F. Summary

SUITE 100	25,151 S.F.
SUITE 108	7,719 S.F.
SUITE 110	11,068 S.F.
SUITE 114	10,981 S.F.
GRAND TOTAL	54,919 S.F.

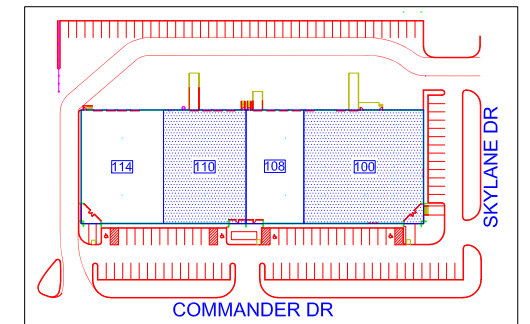
Building Features

- 22' CLEAR HEIGHT
- 43' X 31' COLUMN BAY SPACING
- FULLY AIR CONDITIONED
- (15) 10 X 10 DOCK DOORS; (3) WITH RAMPS
- EASY ACCESS TO MAJOR THOROUGHFARES





LOCATION MAP
NORTH



SITE PLAN
NORTH

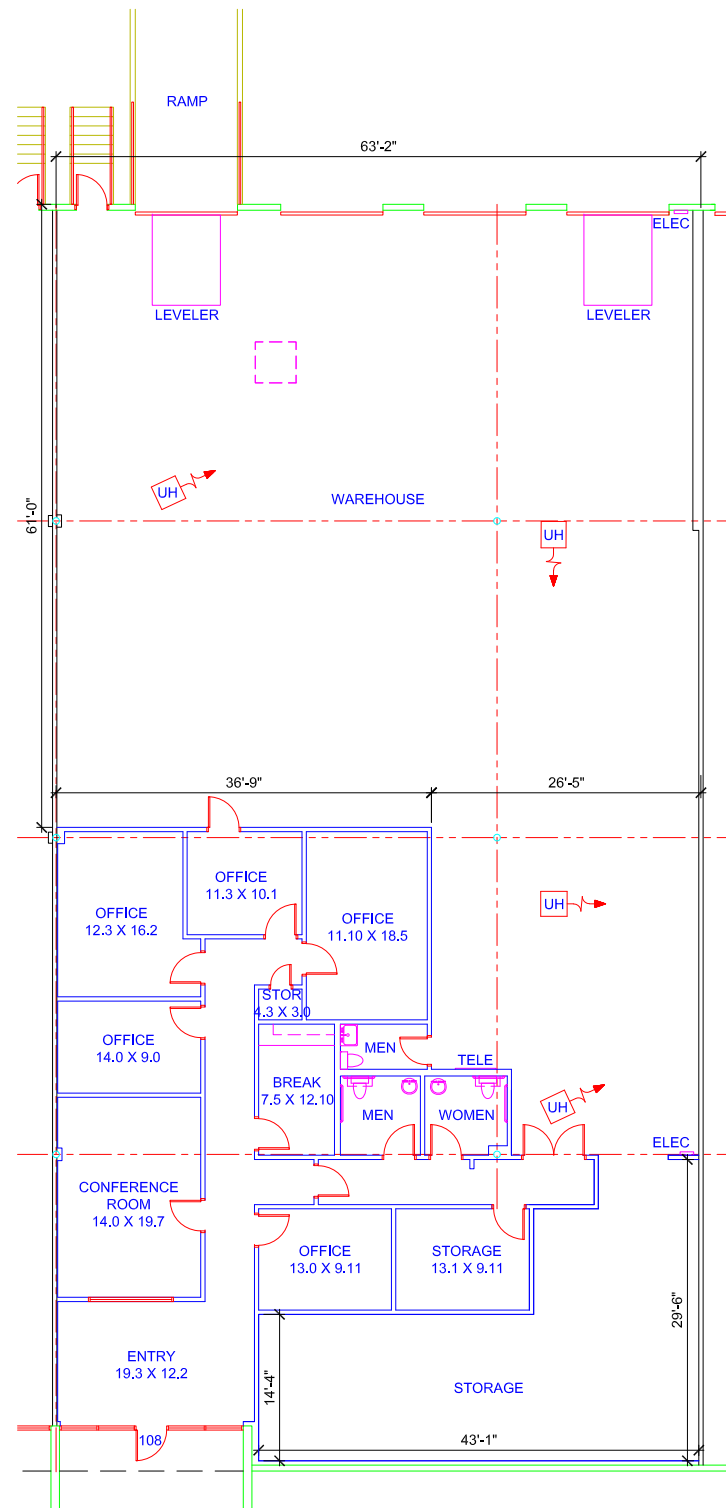
**3200 Commander
Carrollton, TX 75006**

S.F. Summary

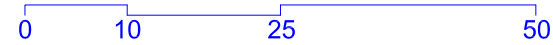
SUITE 100	25,151 S.F.
SUITE 108	7,719 S.F.
SUITE 110	11,068 S.F.
SUITE 114	10,981 S.F.
GRAND TOTAL	54,919 S.F.

Building Features

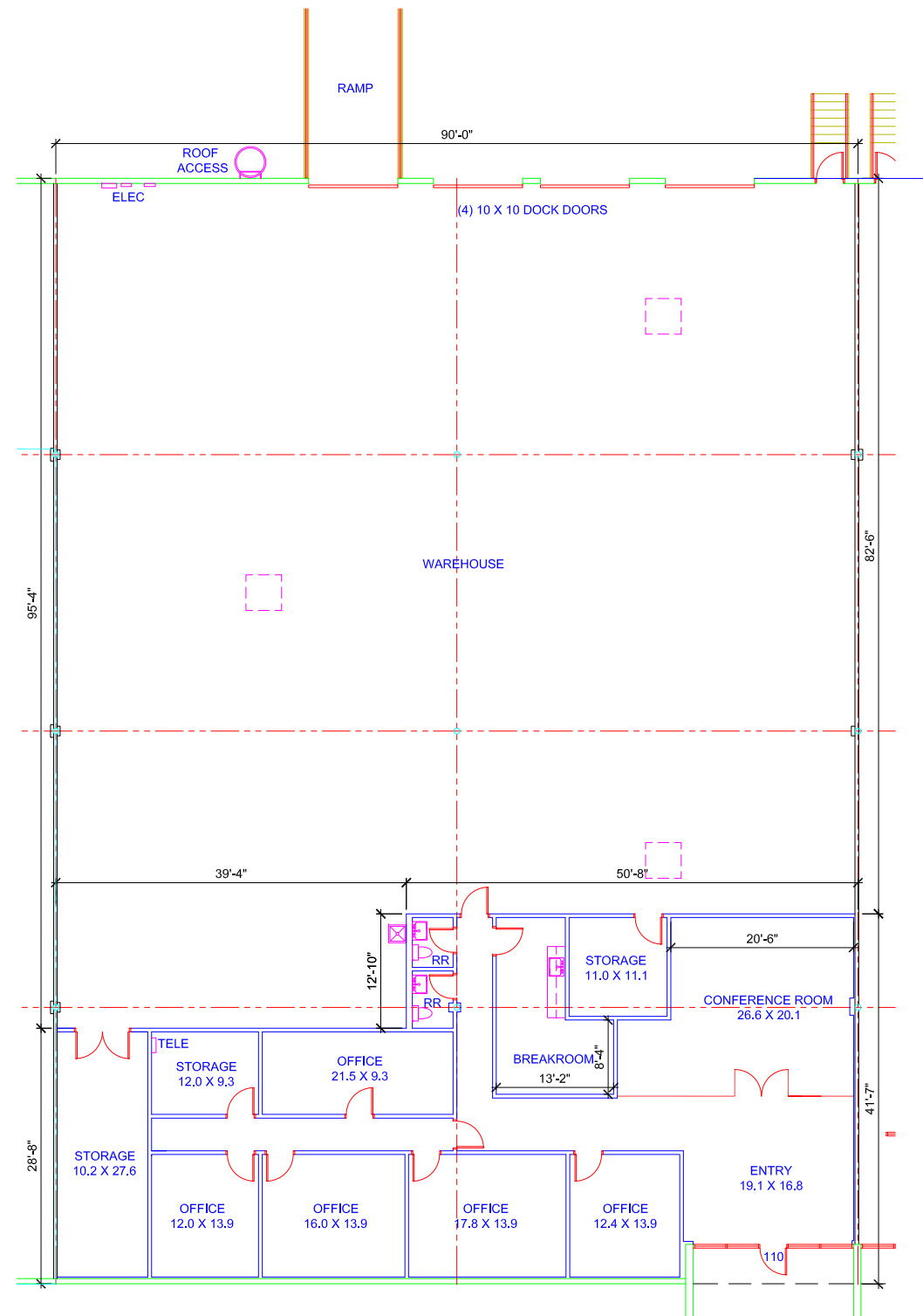
- 22' CLEAR HEIGHT
- 43' X 31' COLUMN BAY SPACING
- FULLY AIR CONDITIONED
- (15) 10 X 10 DOCK DOORS; (3) WITH RAMPS
- EASY ACCESS TO MAJOR THOROUGHFARES



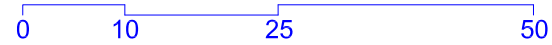
**SUITE 108
OVERALL FLOOR PLAN**



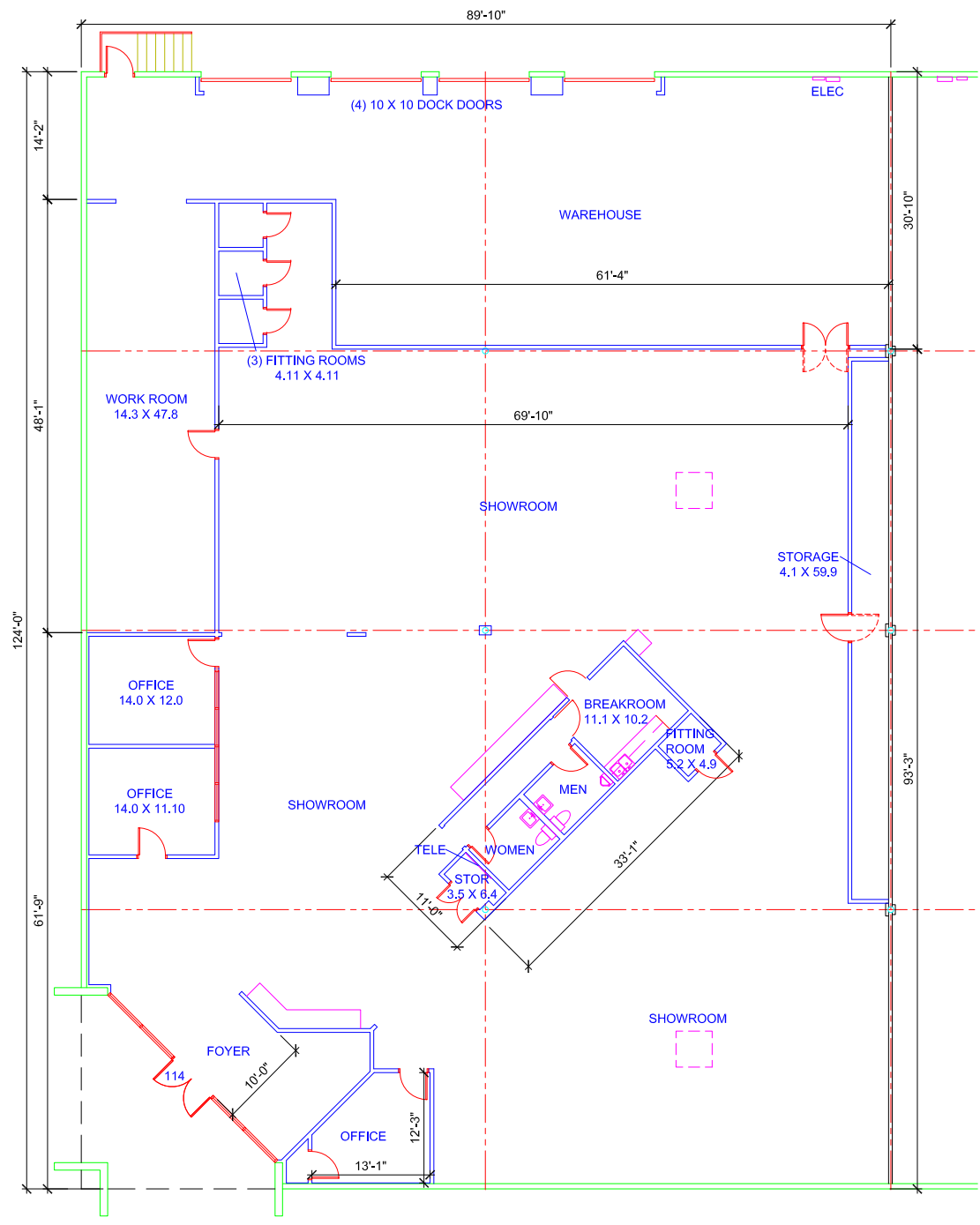
OFFICE	2,306 S.F.
STORAGE	894 S.F.
WAREHOUSE	4,519 S.F.
TOTAL	7,719 S.F.



**SUITE 110
OVERALL FLOOR PLAN**



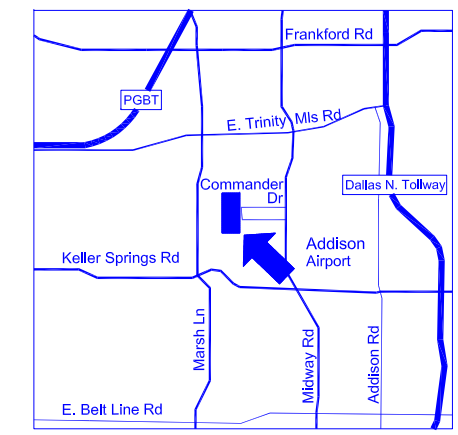
OFFICE	3,234 S.F.
WAREHOUSE	7,834 S.F.
TOTAL	11,068 S.F.



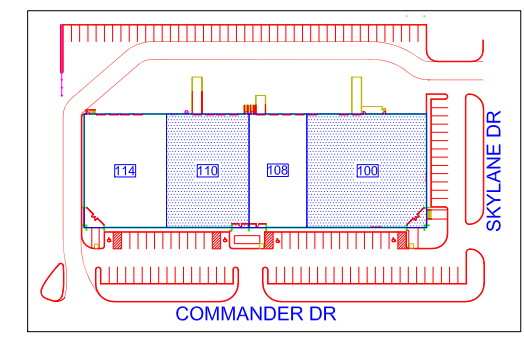
**SUITE 114
OVERALL FLOOR PLAN**



OFFICE/ SHOWROOM	8,161 S.F.
WORK ROOM	714 S.F.
WAREHOUSE	2,106 S.F.
TOTAL	10,981 S.F.



LOCATION MAP
NORTH



SITE PLAN
NORTH

**3200 Commander
Carrollton, TX 75006**

S.F. Summary

SUITE 100	25,151 S.F.
SUITE 108	7,719 S.F.
SUITE 110	11,068 S.F.
SUITE 114	10,981 S.F.
GRAND TOTAL	54,919 S.F.

Building Features

- 22' CLEAR HEIGHT
- 43' X 31' COLUMN BAY SPACING
- FULLY AIR CONDITIONED
- (15) 10 X 10 DOCK DOORS; (3) WITH RAMPS
- EASY ACCESS TO MAJOR THOROUGHFARES

